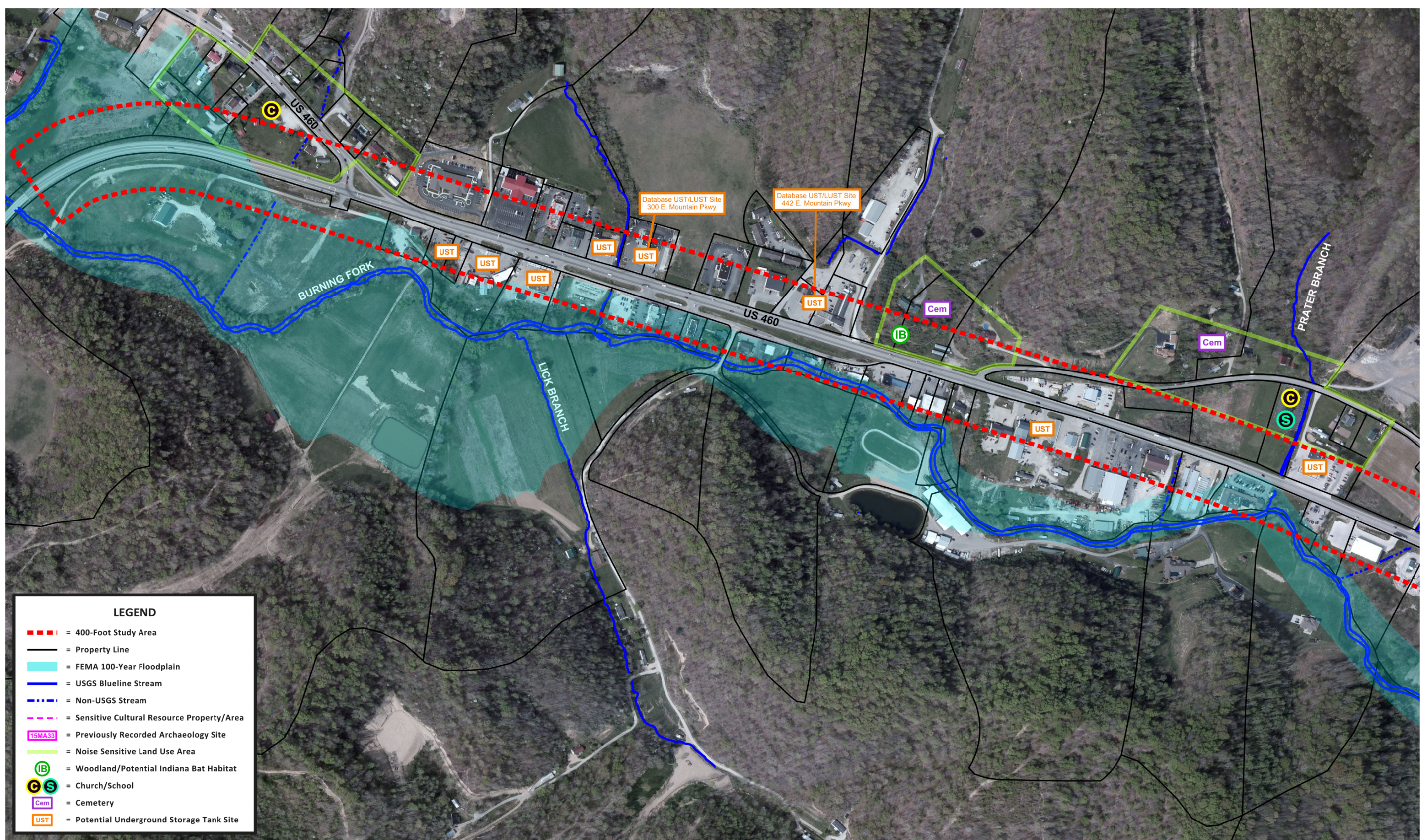




Appendix B – Environmental Overview Map



LEGEND

- - - = 400-Foot Study Area
- = Property Line
- = FEMA 100-Year Floodplain
- = USGS Blueline Stream
- = Non-USGS Stream
- = Sensitive Cultural Resource Property/Area
- 15MA33 = Previously Recorded Archaeology Site
- = Noise Sensitive Land Use Area
- IB = Woodland/Potential Indiana Bat Habitat
- C S = Church/School
- Cem = Cemetery
- UST = Potential Underground Storage Tank Site



April 2012



Environmental Overview

US 460 Improvements Scoping Study
From Burning Fork Bridge to KY 114
Magoffin County, Kentucky

Environmental Features



LEGEND

- - - = 400-Foot Study Area
- = Property Line
- = FEMA 100-Year Floodplain
- = USGS Blue Line Stream
- = Non-USGS Stream
- = Sensitive Cultural Resource Property/Area
- 15MA33 = Previously Recorded Archaeology Site
- = Noise Sensitive Land Use Area
- IB = Woodland/Potential Indiana Bat Habitat
- CS = Church/School
- Cem = Cemetery
- UST = Potential Underground Storage Tank Site

Cain House - Not Eligible
Cain Farmstead Site - 15MG33
(Site Boundary Not Available)

Short Fork Site
15MG38



April 2012

Environmental Overview
US 460 Improvements Scoping Study
From Burning Fork Bridge to KY 114
Magoffin County, Kentucky

Environmental Features